



# SHA Benefit Package

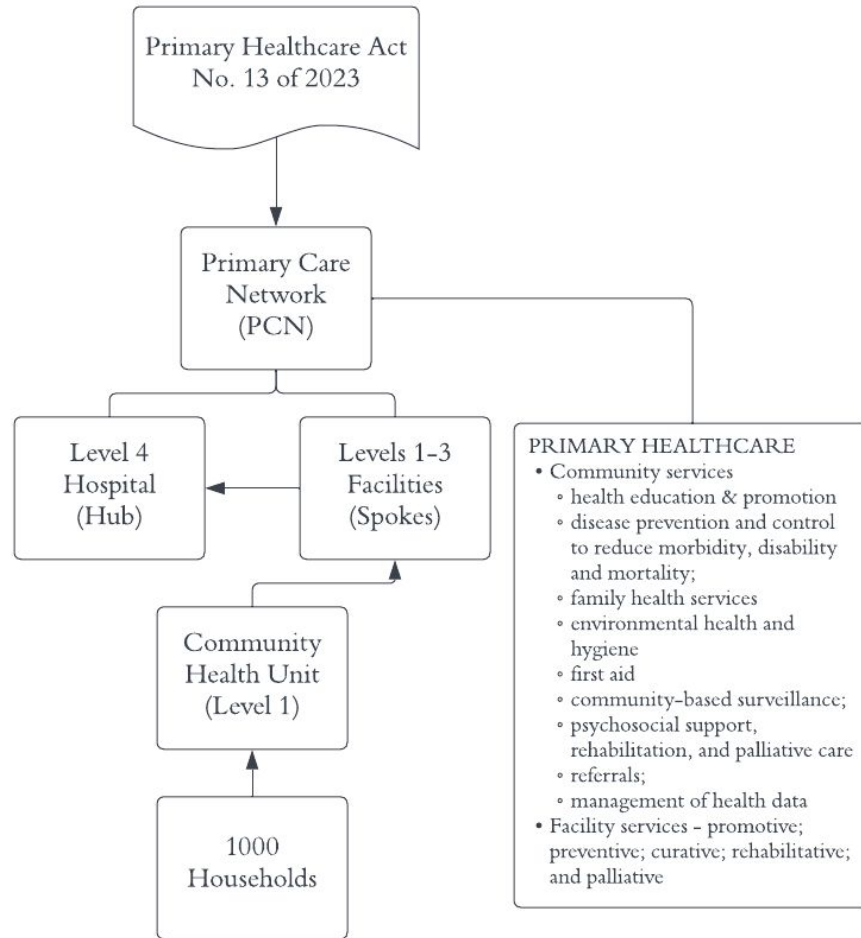
Dennis Okaka



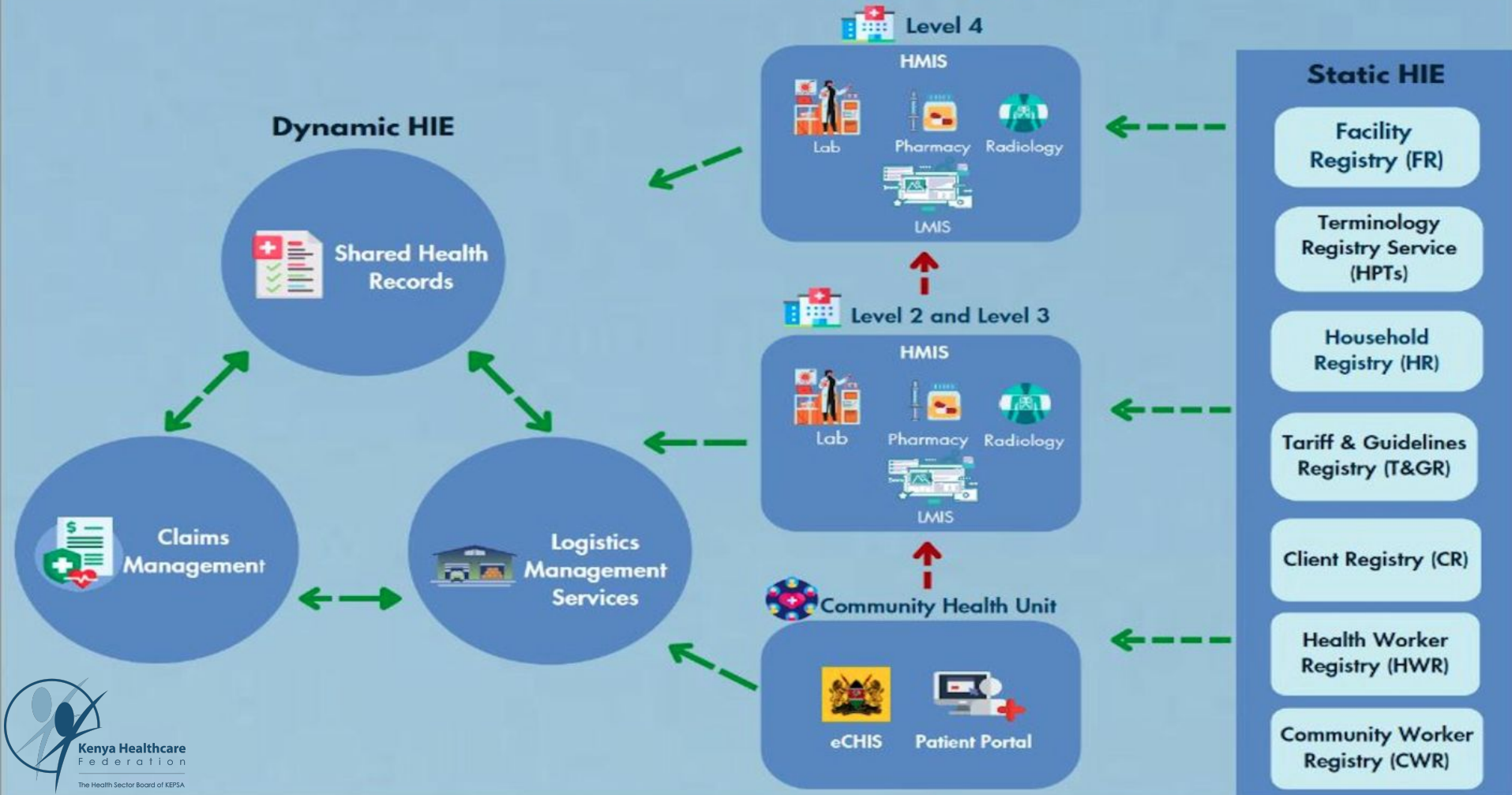
# RELEVANT ACTS

- Primary Healthcare Act No. 13 of 2023
- Facilities Improvement Financing Act No. 14 of 2023
- Digital Health Act No. 15 of 2023
- Social Health Insurance Act No. 16 of 2023
  - General Regulations
  - Dispute Resolution Tribunal Regulations
- SHA Benefits Package

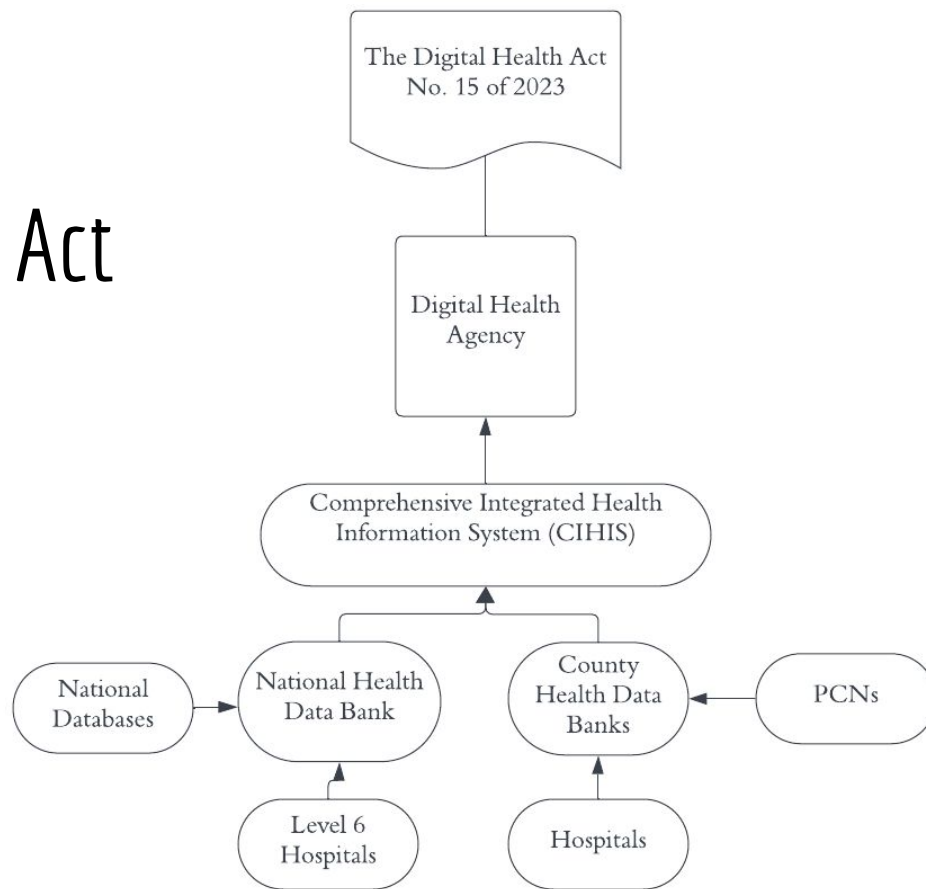
# Primary Healthcare Act



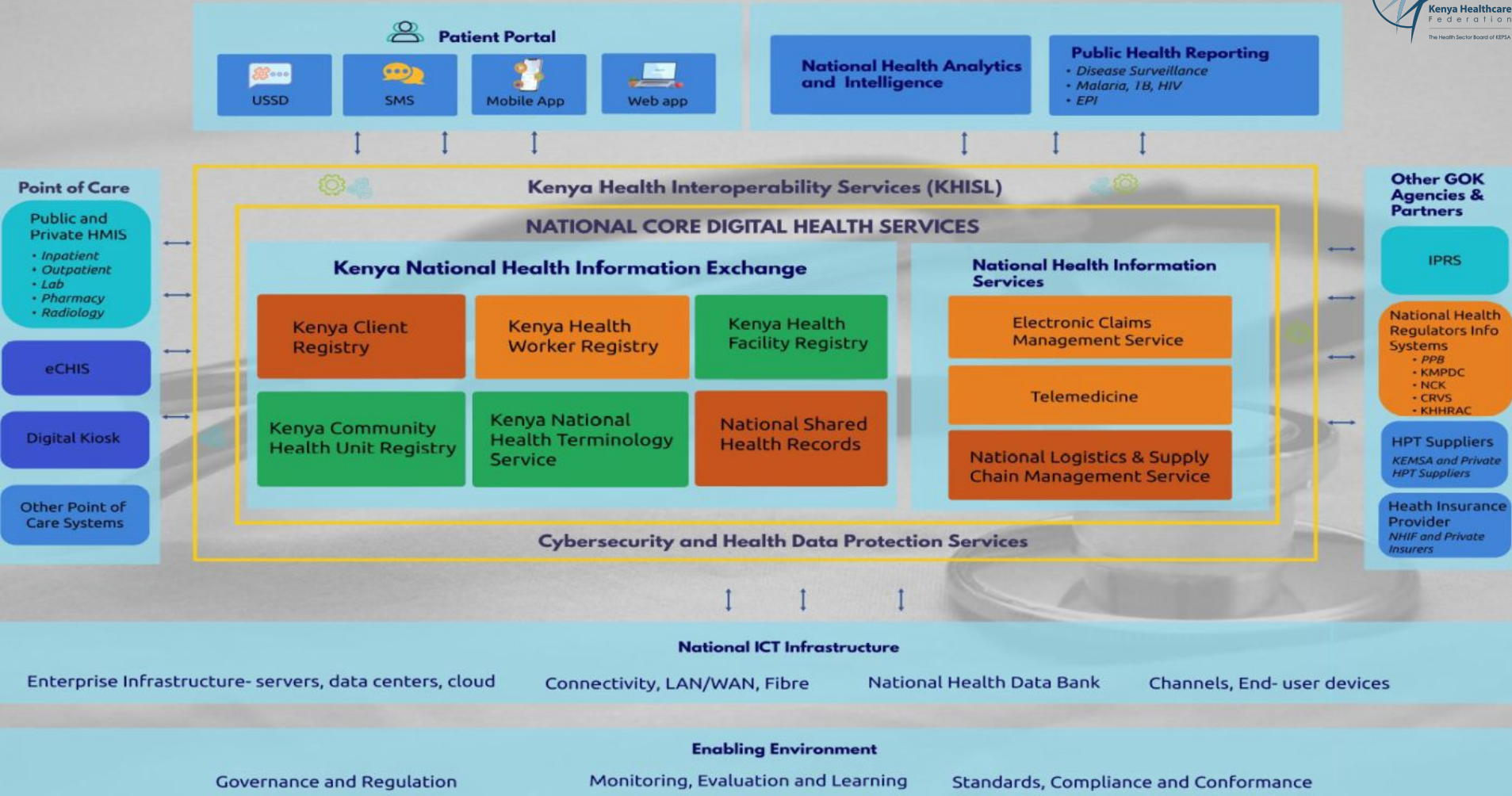
# PCN: HUB & SPOKE MODEL



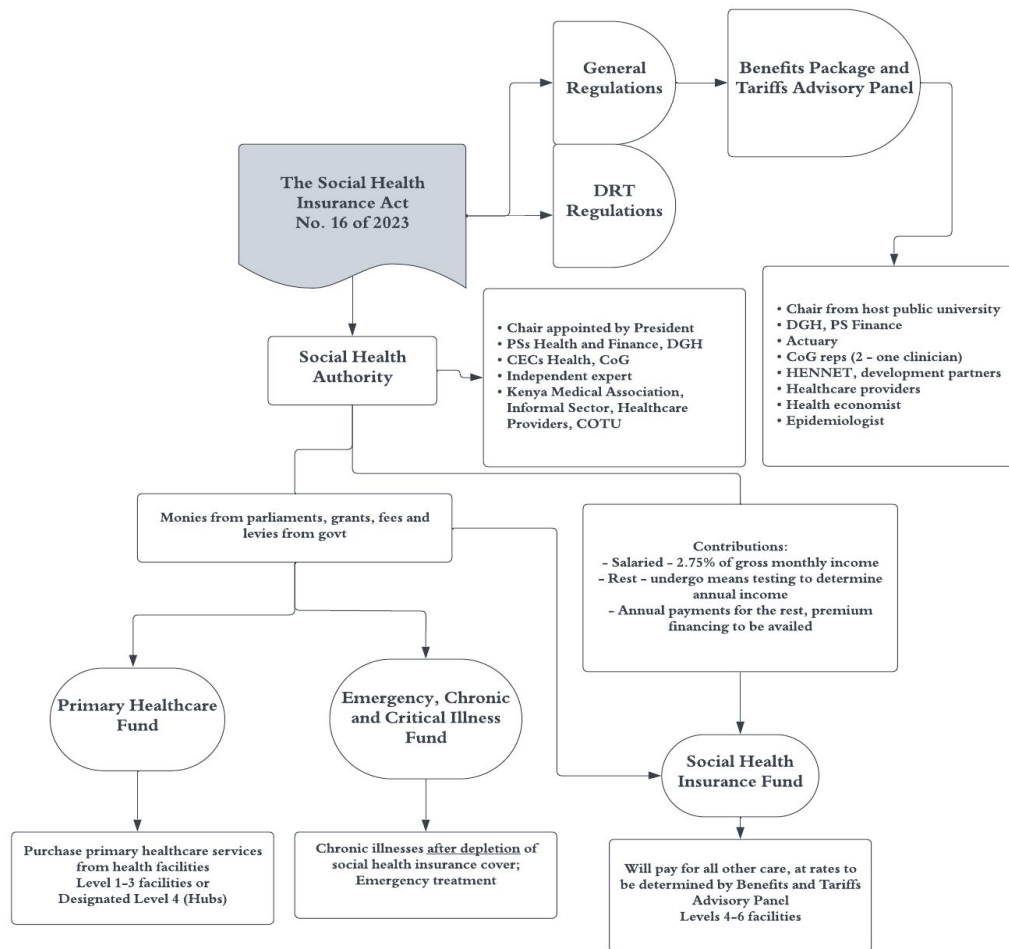
# Digital Health Act



# KENYA DIGITAL HEALTH SUPERHIGHWAY



# Social Health Insurance



# PRIMARY HEALTHCARE FUND



# OUTPATIENT CARE SERVICES

Scope	Access Point	Tariff	Access Rules
<p>Health education and wellness, counselling</p> <ul style="list-style-type: none"> <li>➤ Consultation, diagnosis, and treatment</li> <li>➤ Prescribed laboratory investigations</li> <li>➤ Basic radiological examinations</li> <li>➤ Prescription, drug administration and dispensing</li> <li>➤ Management of acute and chronic conditions for endemic/local cases</li> <li>➤ Management of NCDs, enteric infections; NTDs, STIs and HIV/AIDS</li> <li>➤ Screening for common conditions</li> <li>➤ Minor medical and surgical procedures including male circumcision.</li> <li>➤ Immunization as per KEPI schedule</li> <li>➤ Reproductive, MCH Services as defined by MOH guidelines</li> </ul>	<p>Levels 2-4 PHC facilities</p>	<p><b>KES 900 per person per annum</b></p>	<ul style="list-style-type: none"> <li>➤ Each facility will be mapped to PCN.</li> <li>➤ All registered households will be mapped to a PCN.</li> <li>➤ Budget allocation to the PCN shall be made quarterly.</li> <li>➤ ARVs, antimalarials, anti TBs, and associated tests, family planning commodities, KEPI vaccines will be provided at public facilities, and faith based &amp; private facilities that report to the health information system.</li> </ul>

# MATERNITY, NEWBORN AND CHILD HEALTH SERVICES

Scope	Access Point	Tariff	Access Rules
<ul style="list-style-type: none"> <li>➤ Antenatal care, delivery</li> <li>➤ Aftercare for the mother &amp; newborn</li> <li>➤ Midwifery</li> <li>➤ Operating, recovery, maternity ward and other room charges including meals</li> <li>➤ Newborn Vit. K &amp; immunisation</li> <li>➤ Provision of warmth and newborn resuscitation</li> <li>➤ Diagnostic laboratory tests</li> <li>➤ Transfusion, oxygen</li> <li>➤ Postnatal family planning.</li> <li>➤ Management of PPH, infections, birth traumas and conditions related to birth.</li> <li>➤ Management of neonatal conditions.</li> <li>➤ Obstetric and neonatal complications</li> <li>➤ Anti-D Serum for Rhesus-negative mothers.</li> </ul>	<p>Level 2-3 facilities</p>	<p><b>Normal Delivery - KES. 11,200</b></p> <p><b>Caesarean Section - KES. 32,600</b></p>	<ul style="list-style-type: none"> <li>➤ Normal delivery - max 48 hours stay</li> <li>➤ C-section - max 72 hours stay</li> <li>➤ Emergency medicines included.</li> <li>➤ Accessed by any Kenyan resident female</li> <li>➤ In case of complications beyond delivery max, per diem rate takes effect.</li> <li>➤ ANC and PNC services will be covered under the outpatient</li> <li>➤ Management of complications for newborn will be charged separately from the mother at daily rebate rates for inpatient services.</li> </ul>

# SCREENING & MANAGEMENT OF PRECANCEROUS LESIONS

Scope	Access Point	Tariff	Access Rules
Screening for common cancers (breast, cervix, prostate, and colon)	Level 2-6 with capacity	<ul style="list-style-type: none"> <li>➤ HPV – KES. 3,600</li> <li>➤ PSA – KES. 1,500</li> <li>➤ Stool for occult blood – KES. 400</li> <li>➤ Cryotherapy – KES. 3,000</li> <li>➤ Thermal Ablation – KES. 3,000</li> <li>➤ LEEP – KES. 2,800</li> </ul>	<ul style="list-style-type: none"> <li>➤ Prostate cancer screening in males over 55 years.</li> <li>➤ Colon cancer screening in males over 40 years.</li> <li>➤ CA cervix screening for women between 30-50 years</li> <li>➤ HPV screening for females 35-45 years.</li> </ul>

## OPTICAL HEALTH SERVICES

Scope	Access Point	Tariff	Access Rules
<p>Services covered include consultation and diagnosis, preventive, restorative, and treatment services as necessary:</p> <ul style="list-style-type: none"> <li>➤ Eye health education and counselling.</li> <li>➤ Fundoscopy, VA testing, visual field analysis.</li> <li>➤ Treatment of refractive errors</li> </ul>	<p>Level 2-3</p>	<p><b>KES. 935 for Consultation and dispensing of eyeglasses.</b></p>	<ul style="list-style-type: none"> <li>➤ Limit: KES. 1,000 per Household</li> <li>➤ Pre-authorized service.</li> <li>➤ Limited to beneficiaries below 18 years.</li> <li>➤ Replacement of eyeglasses only after every two years if indicated.</li> </ul>

## END OF LIFE SERVICES

<ul style="list-style-type: none"> <li>➤ Preparation and storage of body in a mortuary</li> <li>➤ Preservation and storage of body in a mortuary.</li> </ul>	<p>Where available</p>	<ul style="list-style-type: none"> <li>➤ <b>KES 500 per day</b></li> </ul>	<ul style="list-style-type: none"> <li>➤ Limit up to 5 days</li> </ul>
--	------------------------	--	--

## MEDICAL INPATIENT SERVICES

Scope	Access Point	Tariff	Access Rules
<p>Management of disease/condition while admitted.</p> <ul style="list-style-type: none"> <li>➤ Pre-admission evaluation.</li> <li>➤ Hospital accommodation charges, meals and nursing care in general ward beds</li> <li>➤ Intra-admission consultation and reviews, labs, imaging, procedures, meds</li> <li>➤ Bedside services including PT, OT, oxygen, therapeutic nutritional support.</li> <li>➤ Transfusion</li> <li>➤ Post-discharge medication or follow-up within the treatment plan.</li> </ul>	<p>Level 3</p>	<p><b>Level 3 - KES. 2,400 per day</b></p>	<ul style="list-style-type: none"> <li>➤ Admission up to 50 days</li> </ul>

# SOCIAL HEALTH INSURANCE FUND

# OUTPATIENT CARE SERVICES

Scope	Access Point	Tariff	Access Rules
<p>Health education and wellness, counselling</p> <ul style="list-style-type: none"> <li>➤ Consultation, diagnosis, and treatment</li> <li>➤ Prescribed laboratory investigations</li> <li>➤ Basic radiological examinations</li> <li>➤ Prescription, drug administration and dispensing</li> <li>➤ Management of acute and chronic conditions for endemic/local cases</li> <li>➤ Management of NCDs, enteric infections; NTDs, STIs and HIV/AIDS</li> <li>➤ Screening for common conditions</li> <li>➤ Minor medical and surgical procedures including male circumcision.</li> <li>➤ Immunization as per KEPI schedule</li> <li>➤ Reproductive, MCH Services as defined by MOH guidelines</li> </ul>	<p>Levels 4-6</p>	<ul style="list-style-type: none"> <li>➤ <b>KES 2,000 as a fixed FFS</b></li> <li>➤ ARVs, HIV testing and follow up tests, FP, anti-malarial medication and testing, anti TBs and testing, KEPI vaccines, as provided in guidelines, will be offered at no cost to patient.</li> </ul>	<ul style="list-style-type: none"> <li>➤ Limit: 4 Visits per year per person</li> <li>➤ ARVs, antimalarials, anti TBs, and associated tests, family planning commodities, KEPI vaccines will be provided at public facilities, and faith based &amp; private facilities that report to the health information system.</li> </ul>

# MEDICAL INPATIENT SERVICES

Scope	Access Point	Tariff	Access Rules
<p>Management of disease/condition while admitted.</p> <ul style="list-style-type: none"> <li>➤ Pre-admission evaluation.</li> <li>➤ Hospital accommodation charges, meals and nursing care in general ward beds</li> <li>➤ Intra-admission consultation and reviews, labs, imaging, procedures, meds</li> <li>➤ Bedside services including PT, OT, oxygen, therapeutic nutritional support.</li> <li>➤ Transfusion</li> <li>➤ Post-discharge medication or follow-up within the treatment plan.</li> </ul>	<p>Levels 4-6</p>	<p><b>Level 4 - KES 3,500</b>  <b>Level 5 - KES 4,000</b>  <b>Level 6 - KES 5,000</b>  <b>➤ PPM: Per Diem</b></p>	<ul style="list-style-type: none"> <li>➤ Limit: Up to 50 days per Household</li> <li>➤ Days above that charged to ECCIF</li> </ul>



# MATERNITY, NEWBORN AND CHILD HEALTH SERVICES

Scope	Access Point	Tariff	Access Rules
<ul style="list-style-type: none"> <li>➤ Antenatal care, delivery</li> <li>➤ Aftercare for the mother &amp; newborn</li> <li>➤ Midwifery</li> <li>➤ Operating, recovery, maternity ward and other room charges including meals</li> <li>➤ Newborn Vit. K &amp; immunisation</li> <li>➤ Provision of warmth and newborn resuscitation</li> <li>➤ Diagnostic laboratory tests</li> <li>➤ Transfusion, oxygen</li> <li>➤ Postnatal family planning.</li> <li>➤ Management of PPH, infections, birth traumas and conditions related to birth.</li> <li>➤ Management of neonatal conditions.</li> <li>➤ Obstetric and neonatal complications</li> <li>➤ Anti-D Serum for Rhesus-negative mothers.</li> </ul>	<p>Levels 4-6</p>	<p><b>Normal Delivery - KES. 11,200</b></p> <p><b>Caesarean Section and essential newborn care - KES. 32,600</b></p>	<ul style="list-style-type: none"> <li>➤ Normal delivery - max 48 hours stay</li> <li>➤ C-section - max 72 hours stay</li> <li>➤ Emergency medicines included.</li> <li>➤ Accessed by any Kenyan resident female</li> <li>➤ In case of complications beyond delivery max, per diem rate takes effect.</li> <li>➤ ANC and PNC services will be covered under the outpatient</li> <li>➤ Management of complications for newborn will be charged separately from the mother at daily rebate rates for inpatient services.</li> </ul>

## RENAL CARE PACKAGE

Scope	Access Point	Tariff	Access Rules
<ul style="list-style-type: none"> <li>➤ Consultation and specialist's review.</li> <li>➤ Cost of the temporary catheter and insertion/removal.</li> <li>➤ Nursing care and dialysis services.</li> <li>➤ Routine laboratory investigations.</li> <li>➤ Dispensation of medication and maintenance drug, counselling and follow-up.</li> <li>➤ Continuous intermittent dialysis and other dialysis protocols.</li> </ul>	<p>Levels 4-6</p>	<ul style="list-style-type: none"> <li>➤ <b>Hemodialysis &amp; Hemodiafiltration</b> <b>KES. 10,650 per session</b></li> <li>➤ <b>Peritoneal dialysis – KES. 180,000 per month</b></li> </ul>	<ul style="list-style-type: none"> <li>➤ Maximum of 3 sessions per week for haemodialysis.</li> <li>➤ Maximum of 2 sessions per week for hemodiafiltration.</li> <li>➤ Maximum of 12 sessions annually for peritoneal dialysis.</li> <li>➤ Payments will be made from the SHIF and ECCIF Funds.</li> <li>➤ Accessible in Level IV-VI facilities with dialysis centres and access to an ambulance and ICU services within a 10km radius.</li> </ul>

# MENTAL WELLNESS BENEFIT PACKAGE

Scope	Access Point	Tariff	Access Rules
<ul style="list-style-type: none"> <li>➤ Mental Health education and counselling.</li> <li>➤ Screening, management and referral for behavioral disorders, neurodevelopmental disorders, affective and psychoactive disorders.</li> <li>➤ Rehabilitation for substance related addictive disorders.</li> </ul>	<p>Levels 3-6</p>	<p>Outpatient Services</p> <ul style="list-style-type: none"> <li>➤ <b>KES. 1,200 per visit</b></li> </ul> <p>Inpatient Services</p> <p><b>Level 4 – KES 3,500</b></p> <p><b>Level 5 – KES 4,000</b></p> <p><b>Level 6 – KES 5,000</b></p> <p><b>PPM: Per Diem</b></p> <p>DSA Rehabilitation</p> <ul style="list-style-type: none"> <li>➤ <b>Detoxification – KES. 14,000</b></li> <li>➤ <b>Rehabilitation – KES. 125,000</b></li> <li>➤ <b>PPM: Case based</b></li> </ul>	<ul style="list-style-type: none"> <li>➤ Max. 7 outpatient visits</li> <li>➤ Mental illness services will be assessed through SHIF and ECCIF</li> <li>➤ Diagnosis and management of behavioral disorders (IP) shall have a limit of up to 35 days.</li> <li>➤ Admissions for rehabilitation for drugs and substance abuse shall be pre-authorized.</li> <li>➤ For beneficiaries who do not complete the three-stage program, or attain minimum stay of 45 days, SHA shall reimburse KES 1,000 for every day of admission up to a maximum of 10 days.</li> </ul>

# SURGICAL SERVICES PACKAGE

Scope	Access Point	Tariff	Access Rules
<ul style="list-style-type: none"> <li>➤ Preoperative admission and care.</li> <li>➤ Minor, major and specialized surgical procedures including organ transplants and implants.</li> <li>➤ Administration of blood and blood products;</li> <li>➤ Intra and post-op complications</li> <li>➤ Postoperative visits</li> <li>➤ Post-procedure pain management.</li> <li>➤ Post-operative ward physiotherapy.</li> <li>➤ Supplies - except for those identified as exclusions.</li> </ul>	<ul style="list-style-type: none"> <li>➤ Level 3-6</li> <li>➤ Selective procurement for Cardiology, Cardiothoracic and vascular, Urology, and Transplant surgeries</li> </ul>	<p>Fee for service - fixed rate Tariffs annexed</p>	<ul style="list-style-type: none"> <li>➤ Minor surgical procedures performed at Level 2 &amp; 3 facilities will be funded from PHF</li> <li>➤ Emergency surgical procedures to stabilize trauma will be covered under the Accident and Emergency Package in ECCIF.</li> <li>➤ Palliative surgery will be paid under ECCIF.</li> <li>➤ Procurement of eligible minor, major and specialized procedures from single specialty providers.</li> <li>➤ Access to specific major and specialized procedures will be limited to facilities with appropriate installed equipment, affiliated surgical and anesthesia personnel.</li> <li>➤ Co-payment allowed for laser and laparoscopic surgeries.</li> </ul>

# ONCOLOGY SERVICES

Scope	Access Point	Tariff	Access Rules
<ul style="list-style-type: none"> <li>➤ Administration of Chemotherapy, Radiotherapy, Brachytherapy and Radiosurgery</li> <li>➤ Consumables, stoma appliances, premeds, and post meds</li> <li>➤ Chemotherapy pump</li> <li>➤ Routine and specialized labs</li> <li>➤ Transfusions</li> <li>➤ Treatment planning</li> <li>➤ Radioiodine therapy</li> <li>➤ Radiological services where necessary as part of oncological treatment planning</li> <li>➤ Management through surgical interventions</li> <li>➤ Management of pre-cancer conditions</li> </ul>	<ul style="list-style-type: none"> <li>➤ Level 4-6</li> </ul>	<ul style="list-style-type: none"> <li>➤ Chemo admin – <b>KES. 5,000</b></li> <li>➤ PET Scan – <b>KES. 53,500</b></li> <li>➤ PSMA PET Scan – <b>KES. 64,200</b></li> <li>➤ CT-Scan – <b>KES.9,600</b></li> <li>➤ MRI – <b>KES.11,000</b></li> <li>➤ Bone scan – <b>KES. 15,000</b></li> <li>➤ Radionuclide scan – <b>KES. 11,000</b></li> <li>➤ Brachytherapy – up to <b>KES. 40,000</b></li> <li>➤ SBRT/SBRS – up to <b>KES. 70,000</b></li> <li>➤ Radiotherapy – up to <b>KES. 3,600</b> per session</li> </ul>	<ul style="list-style-type: none"> <li>➤ Minor surgical procedures performed at Level 2 &amp; 3 facilities will be funded from PHF</li> <li>➤ Emergency surgical procedures to stabilize trauma will be covered under the Accident and Emergency Package in ECCIF.</li> <li>➤ Palliative surgery will be paid under ECCIF.</li> <li>➤ Procurement of eligible minor, major and specialized procedures from single specialty providers.</li> <li>➤ Access to specific major and specialized procedures will be limited to facilities with appropriate installed equipment, affiliated surgical and anesthesia personnel.</li> <li>➤ Co-payment allowed for laser and laparoscopic surgeries.</li> </ul>



# MEDICAL IMAGING AND OTHER INVESTIGATIONS PACKAGE

Scope	Access Point	Tariff	Access Rules
<ul style="list-style-type: none"> <li>➤ MRI</li> <li>➤ CT scans</li> <li>➤ CT Angio</li> <li>➤ Fluoroscopy</li> <li>➤ Mammography</li> <li>➤ Specialized ultrasounds (Dopplers)</li> <li>➤ Echocardiograms (ECHO)</li> <li>➤ Electroencephalograms (EEGs)</li> <li>➤ Reviewing and interpreting radiological images</li> </ul>	<ul style="list-style-type: none"> <li>➤ All facilities with required imaging services.</li> <li>➤ Fluoroscopy, Mammography, Echocardiograms, EEGs, and specialized ultrasounds (dopplers) to be purchased from GOK Level 4-6 hospitals.</li> </ul>	<ul style="list-style-type: none"> <li>➤ MRI – <b>KES 11,000</b></li> <li>➤ CT – <b>KES 9,600</b></li> <li>➤ CT Angio – <b>KES 8,000</b></li> <li>➤ Fluoroscopy – <b>KES 4,000</b></li> <li>➤ Mammography – <b>KES 3,000</b></li> <li>➤ Specialized ultrasounds (Dopplers) – <b>KES 5,000</b></li> <li>➤ Echos– <b>KES 3,500</b></li> <li>➤ EEGs – <b>KES 5,000</b> for a child and <b>KES 8,000</b> for adult.</li> </ul>	<ul style="list-style-type: none"> <li>➤ MRI/CT scans at 2 images per HH - limited to infective, oncology, neurological, degenerative conditions, specific obstetric conditions, cardiac/CVA-related cases and trauma cases.</li> <li>➤ CT scans and CT Angio – 2 images per household.</li> <li>➤ Fluoroscopy at 2 per household:</li> <li>➤ Mammography at 2 per household per year:</li> <li>➤ Specialized ultrasounds at 2 per household per year</li> <li>➤ ECHO at 2 per household per year:</li> <li>➤ Radiology benefits are to be purchased where the service is available and on a need basis.</li> <li>➤ All radiology services are to be pre-authorized.</li> </ul>

# PHARMACY PACKAGE

Scope	Access Point	Tariff	Access Rules
<p>➤ Medicines for select chronic conditions:-</p> <ul style="list-style-type: none"> <li>● Diabetes type 1&amp;2,</li> <li>● Hypertension,</li> <li>● Asthma,</li> <li>● Chronic renal disease on dialysis</li> <li>● Post transplant immunosuppressants</li> <li>● Chronic obstructive pulmonary disease,</li> <li>● Sickle cell</li> <li>● Oncology medicines</li> <li>● Anti-D</li> <li>● Anti Snake Venom</li> <li>● Anti Rabies</li> <li>● Mental Health long-acting medicines</li> <li>● Epilepsy</li> </ul>	<p>➤ All public facility pharmacies</p> <p>➤ All faith-based facility pharmacies</p> <p>➤ Community pharmacies individually or through a pharmacy benefits manager</p>	<p>➤ Fee for service</p>	<p>➤ Quarterly limit of 5,000 per person as captured in the chronic disease registry</p>

## SPECIALIZED LABORATORY SERVICE

Scope	Access Point	Tariff	Access Rules
<p>➤ Specialized testing as captured in the essential laboratory lists and WHO lists for the chronic conditions:</p> <ul style="list-style-type: none"> <li>● Diabetes type 1&amp;2,</li> <li>● Hypertension,</li> <li>● Asthma,</li> <li>● Chronic renal disease on dialysis</li> <li>● Post transplant immunosuppressants</li> <li>● Chronic obstructive pulmonary disease,</li> <li>● Sickle cell</li> <li>● Oncology medicines</li> <li>● Anti-D</li> <li>● Anti Snake Venom</li> <li>● Anti Rabies</li> <li>● Mental Health long-acting medicines</li> <li>● Epilepsy</li> </ul>	<p>➤ Class C, D and E public facility, faith based, and contracted independent Class C, D and E laboratories</p>	<p>➤ Fee for service</p>	<p>➤ Quarterly limit of 5,000 per person as captured in the chronic disease registry</p>



## END OF LIFE SERVICES

- Preparation and storage of body in a mortuary
- Preservation and storage of body in a mortuary.

Levels 4-6 facilities

➤ **KES 500 per day**

➤ Limit up to 5 days

# EMERGENCY, CHRONIC AND CRITICAL ILLNESS FUND

## AMBULANCE EVACUATION SERVICES

<p>Evacuation from the point of the incident to the nearest facility with an A&amp;E center and the transfer of patients requiring emergency and further clinical care from the facility.</p>	<p>Management of all transfers/evacuations through a National Ambulance Call Centre</p>	<p>➤ PPM: Fee-for-service- fixed rate - 25km radius- up to <b>KES 4,500 (Intra-metro)</b>. ➤ A cost per km tariff for services beyond 25 km, <b>KES 75 per km (Extra-metro)</b></p>	<p>➤ Accessible by all Kenyans ➤ Procurement of the ground evacuation services, as an outsourced service to a provider/consortium of providers able to meet the criteria set for at least one region.</p>
---	---	---	---

## ACCIDENT & EMERGENCY SERVICES

Scope	Access Point	Tariff	Access Rules
<p>Resuscitation and stabilization due to:</p> <ol style="list-style-type: none"> <li>1. Cardiac and pulmonary arrest</li> <li>2. Major trauma (severe burns, head injuries, severe wounds, multiple fractures)</li> <li>3. Shock states (Haemorrhagic, septic, dehydration)</li> <li>4. Altered level of consciousness (unconsciousness, confusion)</li> <li>5. Severe respiratory distress</li> <li>6. Seizures</li> <li>7. Chest pain (ACS/PE)</li> <li>8. Acute CVAs (Strokes)</li> <li>9. Anti Snake Venom</li> <li>10. Anti Rabies</li> </ol>	<p>➤ Levels 2-6 facilities</p>	<p>➤ Fee for service up to limits: Ix and Rx</p> <ol style="list-style-type: none"> <li>1. <b>KES 5015;</b> <b>KES 97,900</b></li> <li>2. <b>KES 13,614;</b> <b>KES 79,549</b></li> <li>3. <b>KES 7,637;</b> <b>KES 67,272</b></li> <li>4. <b>KES 12,656;</b> <b>KES 8,000</b></li> <li>5. <b>KES 6,315;</b> <b>KES 8,000</b></li> <li>6. <b>KES 12,156;</b> <b>KES 8,950</b></li> <li>7. <b>KES 11,233;</b> <b>KES 41,400</b></li> <li>8. <b>KES 11,033;</b> <b>KES 95,200</b></li> <li>9. <b>KES 6,600 for first dose</b></li> <li>10. <b>KES 3,800 for first dose</b></li> </ol>	<p>➤ Accessed by all residents in Kenya.</p> <p>➤ Care for up to a maximum of 24 hours after which the SHIF is activated for paid up members.</p> <p>➤ Amounts provided are maximum reimbursable tariffs.</p>

## CRITICAL ILLNESS PACKAGE

Scope	Access Point	Tariff	Access Rules
Critical care admissions in ICU, HDU, NICU, PICU and burns units	Level 4-6	<b>ICU - KES 35,000</b> <b>HDU - KES 10,000</b> <b>PPM: Per diem rate</b>	<ul style="list-style-type: none"> <li>➤ ICU up to 14 days</li> <li>➤ HDU up to 10 days</li> <li>➤ Co-payment for amounts above daily rate</li> </ul>

## PALLIATIVE CARE SERVICES

Enhancing the QoL for patients with serious chronic or life-threatening illnesses - symptom management, psychosocial support, caregiver support and end-of-life care.	Level 4-6	➤ <b>KES 5000 per day</b>	<ul style="list-style-type: none"> <li>➤ Up to 60 days</li> <li>➤ Co-payment for amounts above daily rate</li> </ul>
---	-----------	---------------------------	--

# CHRONIC ILLNESSES

Scope	Access Point	Tariff	Access Rules
<p>➤ Longitudinal management of chronic conditions and diseases beyond the SHIF limit:</p> <ul style="list-style-type: none"> <li>● DM and its complications,</li> <li>● HTN, cardiovascular conditions,</li> <li>● Asthma, COPD, SCD</li> <li>● Dialysis, pre-transplant evaluation</li> <li>● Post-transplant immunosuppressive therapy</li> </ul> <p>➤ Management of cancers beyond the SHIF limit</p> <p>➤ Management of mental, neurodevelopmental, affective, psychoactive disorders and substance addictive disorders and other mental health conditions</p> <p>➤ Selected specialized surgeries</p>	<p>➤ Levels 4-6 facilities</p>	<p>➤ Same tariff and PPMs applied under SHIF</p>	<p>➤ Paid up SHIF members</p>

## ASSISTIVE DEVICES

Scope	Access Point	Tariff	Access Rules
<p>Provision of assistive devices to support patients with permanent physical and/or sensory disabilities and progressive chronic conditions such as Parkinson’s Disease and multiple sclerosis.</p>	<ul style="list-style-type: none"> <li>➤ Levels 4-6 facilities</li> </ul>	<ul style="list-style-type: none"> <li>➤ Hearing aids – KES. 55,000</li> <li>➤ Crutches – KES. 900</li> <li>➤ Clubfoot brace – KES. 1,000</li> <li>➤ Walking frames – KES. 500</li> <li>➤ Therapeutic footwear – KES. 1,000</li> </ul>	<ul style="list-style-type: none"> <li>➤ To be issued to persons with permanent disability recognized by the National Council for Persons with Disability</li> <li>➤ One device per household per year, except for therapeutic footwear, which has a limit of two per household per year.</li> <li>➤ Hearing Aids are limited to individuals aged 18 years and below and will only be issued once per lifetime.</li> <li>➤ Devices required due to temporary inability or immobility will be factored in the surgical package.</li> </ul>

# Finance Bill Highlights & Projections

- PHF
  - OP @ KES 900 per pax, population of KES 56.2 million ( $56,200,000 \times 900$ ) = **KES 50.5 billion**
- Maternity care
  - 1,221,444 births registered in 2022 (*KNBS Economic Survey*)
  - Assuming 10% C/S rate
    - $(1,200,000 \times 90\% \times 11,200)$  = **KES 12 billion**
    - $(1,200,000 \times 10\% \times 35,600)$  = **KES 4.3 billion**
- Last office (mortuary)
  - 213,210 deaths registered in 2022 (*KNBS Economic Survey*)
  - KES 500 per day, estimate 3 days =  $(213,210 \times 500 \times 3)$  = **KES 319 million**
- Healthcare allocation - KES 127 billion (KES 141.2 billion in PY)
  - **PHF - KES 4.1 billion** (8% of OP requirement)
  - **ECCIF - KES 2 billion**
  - **Free maternity care? KES 2 billion** (KES 4.1 billion in PY) - 25% of maternity requirement



# Empanelment, Administration and Management

- Key actions for providers previously empaneled on NHIF with active contracts as at 30th June 2024
- Will the transition be seamless or should the providers prepare for SHA re-assessments?
- For providers not previously empaneled, what next?
- Key changes with SHIF from NHIF regarding administration, claims management that providers need to prepare for?
-

QUESTIONS?